



What will my Commodore home look like?



How will my new home be constructed?



Feature: 2x10 floor joists-graded lumber, built 16" on center

Benefit: Strong floor-16" on center aligns floor joists and wall studs for increased strength. Graded lumber has a lower moisture content and fewer knots. Lower moisture helps eliminate warping and fewer knots means stronger lumber.



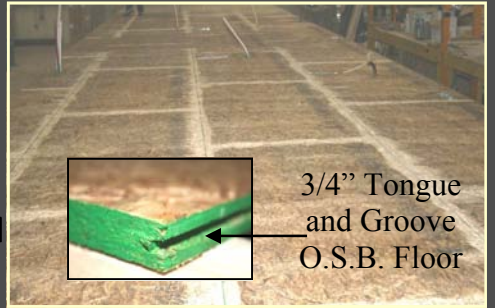
Feature: Double 2x10's around each half of floor (4) 2x10 at the center line

Benefit: Greater strength and stability which is important when installed over a basement or crawl space.



Feature: Water lines and insulated heat ducts installed in the floor

Benefit: Insulated ducts are whisper quiet with no heat loss. Eliminates the cost of installing water lines & duct system.



Feature: 3/4" tongue & groove O.S.B. floor

Benefit: A 3/4" tongue and groove O.S.B. floor is one the strongest, most durable decking materials available. It creates an even floor and helps eliminate floor squeaks.



Feature: High efficiency furnace with water heater (Both installed)

Benefit: High efficiency furnace reduces heating bills. There is no cost to install a heating system or water heater and this also helps shorten completion time.



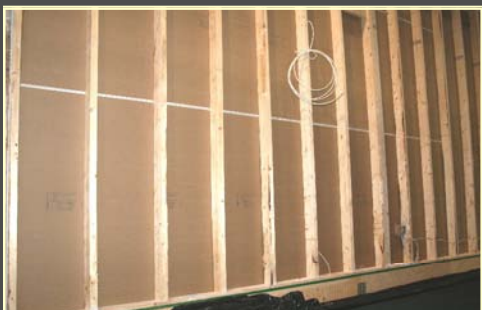
Feature: 2x6 sidewalls w/ R-19 Insulation

Benefit: 2x6 walls are stronger and have more depth than a 2x4 wall and allow increased insulation. (R-19 instead of R-11)



Feature: All exterior walls are wrapped in O.S.B. sheathing. (weather wrap is optional)

Benefit: O.S.B. increases the structural strength of the home and weather wrap helps eliminate air infiltration.



Feature: All center walls & interior walls are 2x4.

Benefit: Superior to 2x3 studs because 2x4 studs add an extra inch of support.



Feature: (3) 2x6 studs over all doors and windows Note the extra studs at the side of the window.

Benefit: Creates a very strong support header and an extra strong window opening.



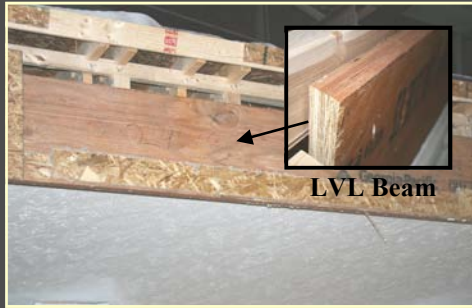
Feature: Double 2x6 top plate

Benefit: Increased strength where the sidewall and roof are connected.

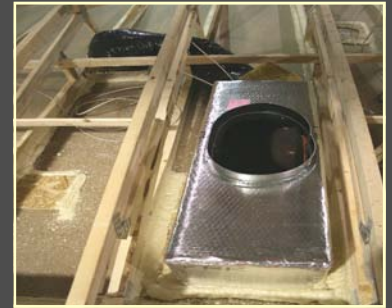
Exciting Exteriors with Exceptional Curb Appeal



Feature: Thermo pane, vinyl, tilt in windows
Benefit: Energy efficient, easy to clean. Uses 11/16" insulated glass & constructed w/virgin PVC vinyl. Fusion welded frame and sash corners add strength and durability.



Feature: Laminated LVL beams at ceiling spans
Benefit: Laminated LVL beams are 2.5 times stronger than conventional lumber and insure great stability at all spans.



Feature: Return air system
Benefit: Creates a very even temperature and disbursement of air throughout the home.



Feature: Heavy duty 2x4, 2x6 or 2x8 truss rafters. (Rafter size depends on roof design)
Benefit: Creates an extremely strong rafter system



Feature: Baffles in the roof cavity w/blown insulation
Benefit: Baffles increases the air flow into the roof cavity and keeps the roof cool. Blown insulation eliminates any gaps and is more energy efficient.



Feature: O.S.B. roof decking
Benefit: Very strong and durable decking and a solid foundation for a quality roof system.



Feature: 30 year dimensional shingles with full length ridge vent
Benefit: Shingles are very high quality with an elegant appearance and give years of dependable service. The full length ridge vent gives superior air flow throughout the attic. Many other manufacturers use unsightly round vents or partial length ridge vents.

Feature: Wider floors
Benefit: Wider floors expand the square footage of your home. The increased living area raises your appraised value and affords more living area.

Example:
 If the floor size is 74'x26.8", the total square footage is 1,974.
 If the floor size is 74'x27'4", the total square footage is 2,023.

This gives a total of 49 square feet additional living space.



Why should I buy a Commodore Modular Home instead of a site built home?

Modular Construction



Where do you want the materials for your new home to be stored?



What quality lumber do you expect, and is *Wet Wood* acceptable?



Is standing water and soaked floor decking something you want?



Which environment is perfect for the construction of your new home?

Site Built Construction

